

North Carolina's first ever



# Panel Jam

Blasts Off!

*The origins of modern day pinstripping can be traced throughout history and within nearly every society around the world as a means of cultural identification. From prehistoric French cave paintings to 19<sup>th</sup> century fire trucks, early designs depicted a myriad of objects from every day life.*

Today, the art of the line is still celebrated at gatherings across the country known as Panel Jams. These events attract pinstripers from around the world, who demonstrate their talent by painting designs on automobile panels. These panels, regarded as collectible pieces of folk art, are then auctioned off with all proceeds going to charity.

## Bring Out Your Art

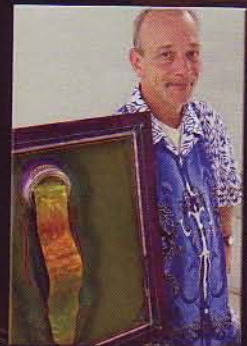
Rodney Earley, owner of Rodney's Custom Cut Sign Company in Holly Springs, N.C., hosted the state's First Annual Charity Panel Jam with BASF as a contributing sponsor. The event also featured freehand painters, airbrushers, cartoon painters and custom sign painters. "It's mainly pinstripers that are featured," says Earley. "But a 'panel' can be just about anything. The sky's the limit." The artists' skills are quite impressive. "Some of the pinstripers can pull a line 3/32 of an inch for a mile."

The Charity Panel Jam was well stocked with food, drink, door prizes and live music all weekend long. It was a big success for the Miracle League of the Triangle charity despite the unexpected rain. "The band got through a couple of songs before the rain started coming down really hard," says Earley. "But everyone still had a hoot." Some of the 12-inch by 18-inch panels went for as much as \$745, and the auction raised over \$9,000 in only a couple of hours. Next year, in an effort to combat Mother Nature's unpredictable mood swings, Rodney vows to host the event at an indoor venue.

## The Sign of Design

All of the panels created at the event were initially coated with R-M® Carizzma®. This comes as no surprise considering the company's well-established relationship with BASF. R-M Diamont™ is the primary paint they use to produce high-end commercial and residential signage pieces

*Rodney Earley shares his appreciation for art with one of his own designs.*



for their clients. "They paint anything from housing development signs to town square beacons," BASF rep Manny Brooks says about Rodney's Custom Cut Sign Company. "80 percent of his paint is automotive." From the most modern backlit sign designs, to the hand-crafted stylings of a bygone era, Rodney uses BASF because of the lustrous finish, lasting durability and comprehensive training programs they provide. "BASF always treats us real well," says Earley. "They're off the hook."